



What's New in Preactor 12

Installed by more than 4,000 companies in 75 countries around the world.

5 IMPORTANT FACTS ABOUT PREACTOR 12

Preactor 12 offers a number of new features and functions that further enhances your Preactor system.

1 | SECURITY MODULE

The new security module provides control over who can access Preactor and, depending on their designated role, what data and menu options they have access to.

2 | IMPORT/EXPORT WIZARD

The new import/export wizard has many new features and improvements to make it easier and more intuitive to use.

3 | PERFORMANCE

Further improvements have been made to Preactor 12 which now works much faster than before, especially noticeable with large data sets and complex scheduling rules.

4 | OVERVIEW

Preactor 12 offers an enhanced 'look and feel' and a number of new features such as enhanced scrolling and zooming.

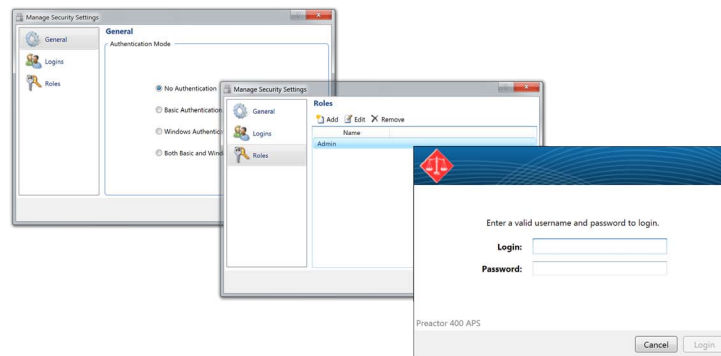
5 | STAGING TABLES

Preactor now offers features for easier integration to other software using Preactor Link with staging tables that help to pass data between applications in a faster and automated way.

There have been a number of changes and improvements in Preactor 12 that will benefit every Preactor user.

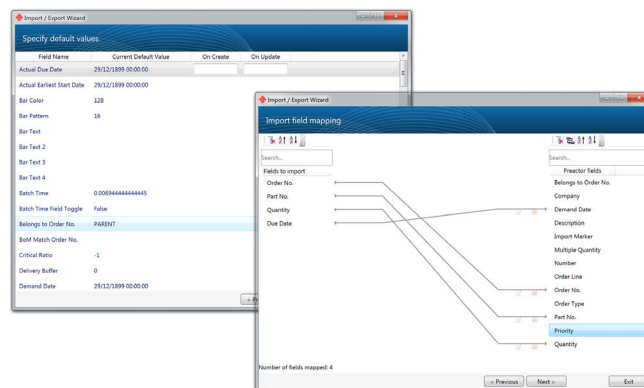
SECURITY MODULE

The security module offers you the opportunity to control the access to Preactor and which menus and data tables a user can see and alter. You can choose the method of authentication. Menu options and actions in the Preactor Desktop are labelled generically as Workflows. Roles represent the link between a Workflow and a User.



IMPORT/EXPORT WIZARD

This tool has been completely re-written to make it more intuitive and easy to use. Mapping of data fields between the imported data and the Preactor tables now uses a graphical interface and drag and drop functionality.



UNICODE SUPPORT

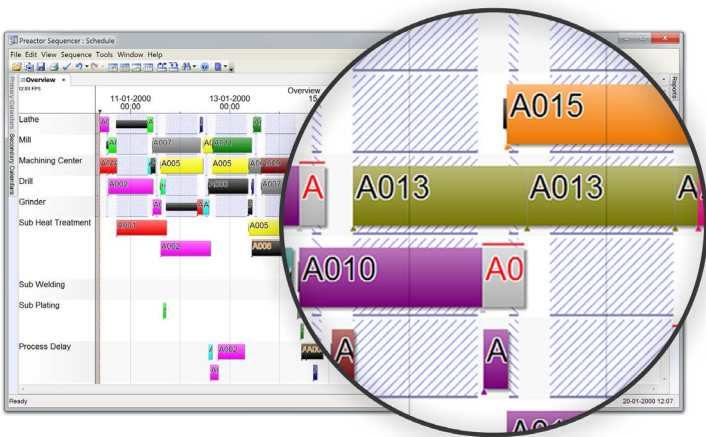
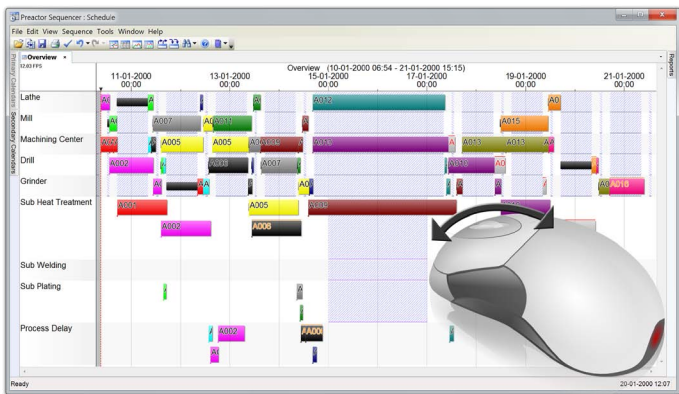
Preactor now offers full Unicode support. The most obvious benefit is for translations into non-Latin alphabets. They now work on any language version of Windows.

PERFORMANCE

Preactor 12 has been updated to work better and faster when handling large data sets. This includes improvements in the performance of ancillary functions such as Import/Export and responsiveness. There is also a significant reduction in memory requirements.

OVERVIEW

A number of improvements have been made to the Preactor Overview Gantt and Trace Charts in Preactor 12. We have improved the look and feel and added scroll wheel zooming and grab and drag scrolling. We have also increased the responsiveness of these charts when changes are made such as after a drag and drop of an operation.



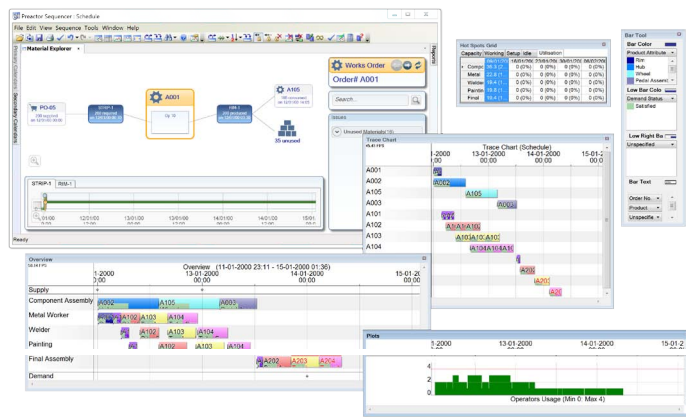
CALENDARS

There have been a number of enhancements made to calendar functionality. There is now an option to automatically consolidate calendar periods. Many users set up their calendars for each day so unless you work 24 hours a day you are likely to have an off-shift period at the end of the day followed by another one at the beginning of the next. As each state change is evaluated by Preactor this can slow down Preactor's performance. Consolidating adjacent periods overcomes this.

Also it is now possible to save the calendar applied to each resource with the schedule. This is useful in comparing alternative schedules with different calendar templates. It is also now possible to import and apply an alternative calendar template into an existing schedule.

WINDOW DOCKING

The Material Explorer is now dock-able. Most other windows become float-able such as the Overview, Trace Chart and Editor.



STAGING TABLES

Staging tables provide an area in the database for feeding Preactor with data from other systems. A common issue is that data is usually in Order Header / Order Detail form. Preactor Parent / Child relationships effectively describe this, but the supporting tables are not in a normalized form. To make staging easier, parent and child records are normalized.

The Preactor 12 implementation of the staging tables will primarily be aimed at supporting Preactor Link. Preactor Link v5 will be released to interwork with Preactor 12. More generic facilities will be added in future releases.

SSRS 2008 / 2008 R2 RDL SUPPORT

In Preactor 12 the latest version of Report Viewer is included. This supports Server Reports of 2005 / 2008 / 2008 R2 RDL Schemas and Local Reports for 2005 / 2008 RDL Schemas. The latest common schema is 2008 and Report Builder 2.0 can be used to build reports.

CONTACT DETAILS

The Preactor Group Ltd
Combrash Park
Bumpers Way
Chippenham
Wiltshire
United Kingdom
SN14 6RA

Tel: +44 (0) 1249 650316
Web: www.preactor.com
Email: sales@preactor.com

Preactor is a registered trademark of Preactor International Limited. Microsoft is a registered trademark of the Microsoft Corporation.

